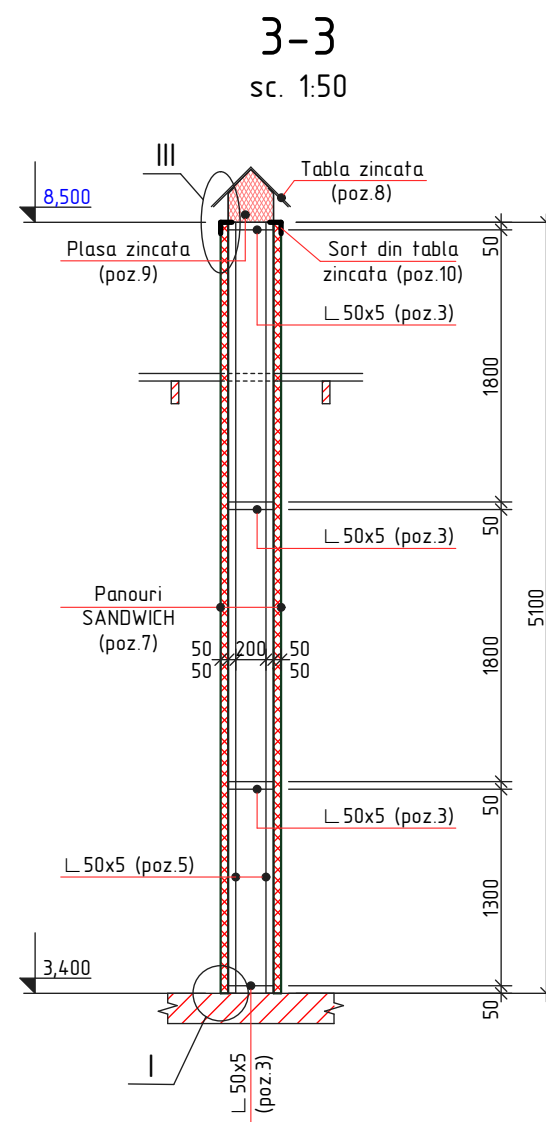
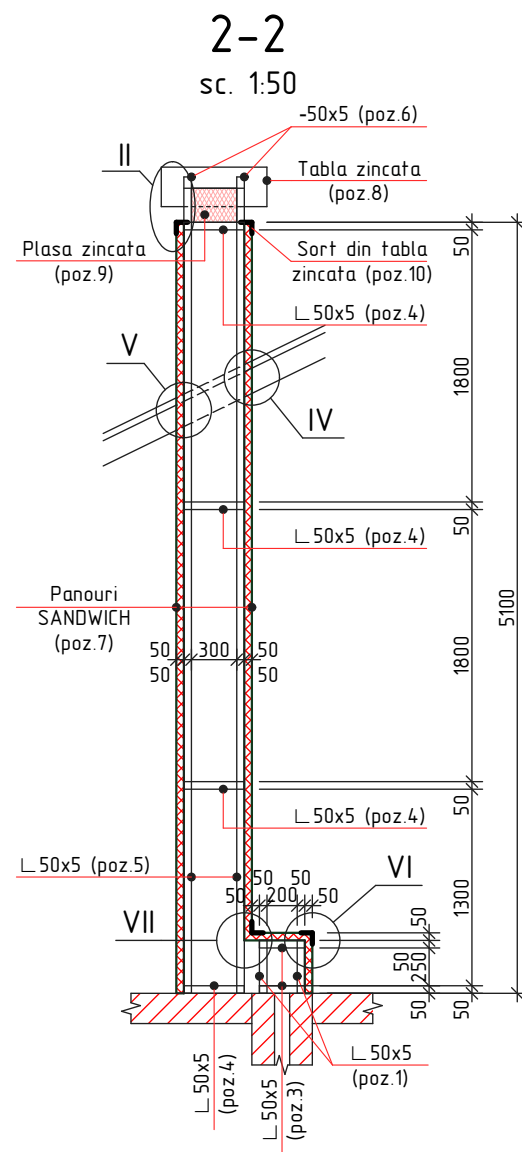
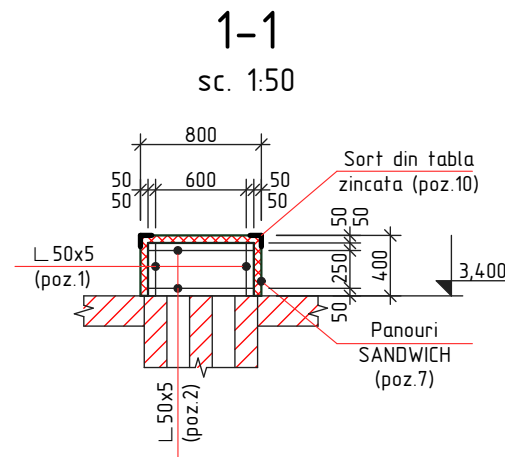
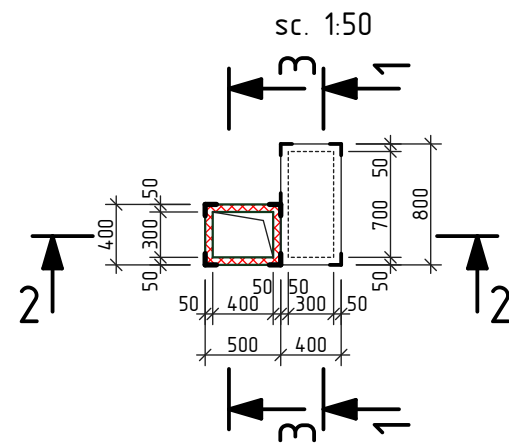
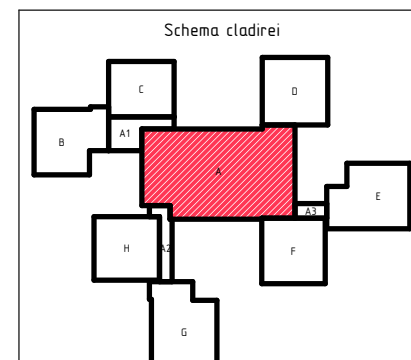


Cos de ventilare Cv-6



Specificatia materialelor Cv-6

Pozitia	Denumirea	buc.	Massa un. kg.	Nota
	Cos de ventilare Cv-6	1		
1	L 50x5 GOST 8509-86, l=350	4	1,32	5,28 kg
2	L 50x5 GOST 8509-86, l=700	4	2,64	10,56 kg
3	L 50x5 GOST 8509-86, l=300	12	1,13	13,56 kg
4	L 50x5 GOST 8509-86, l=400	8	1,51	12,08 kg
5	L 50x5 GOST 8509-86, l=5100	4	19,23	76,92 kg
6	—50x5 GOST 103-76, l=900	2	1,76	3,52 kg
7	Panouri SANDWICH antifoc de culoare alba, $\delta=50\text{mm}$	-	-	9,88 m ²
8	Tabla zincata de culoare rosie, $\delta=0,5\text{mm}$	-	-	0,49 m ²
9	Plasa expandata zincata, celula 10x20 mm	-	-	0,40 m ²
10	Sort din tabla zincata de culoare alba $\delta=0,5\text{mm}$, L=150mm, l=25800mm	-	-	3,87 m ²
11	Ancora M6 l=65mm GOST 28778-90	10	0,032	0,32 kg
12	Sort din tabla zincata de culoare rosie $\delta=0,5\text{mm}$, L=800mm, l=6000mm	-	-	4,80 m ²
13	Banda de etansare	-	-	6,00 m
14	Asteriala 500x30(h), S=2,24m ²	-	-	0,07 m ³



2020	28.07-D/20-SAC			Reparatia capitala a acoperisului scolii primare nr. 21 "S. Vangheli" din str. Tudor Vladimirescu 16			
A.S.P	Mihaila V.		07.20	Scoala primara Bloc A	faza	plansa	planse
I.S.P	Hihlat Em.		07.20		PE	42	
Elaborat	Mihaila V.		07.20	Cos de ventilare Cv-6. Specificatia materialelor. Sectiunea 1-1,...,3-3		"GEO-CAD-PROIECT" mun. Balti	